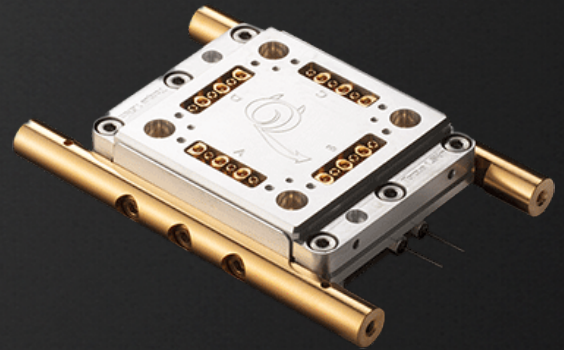
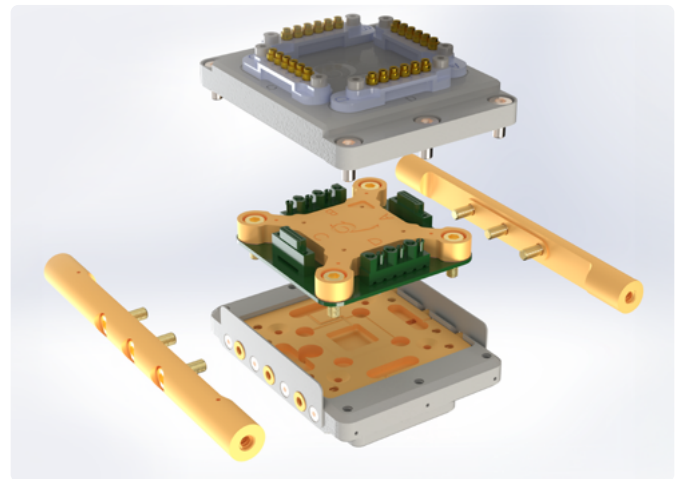
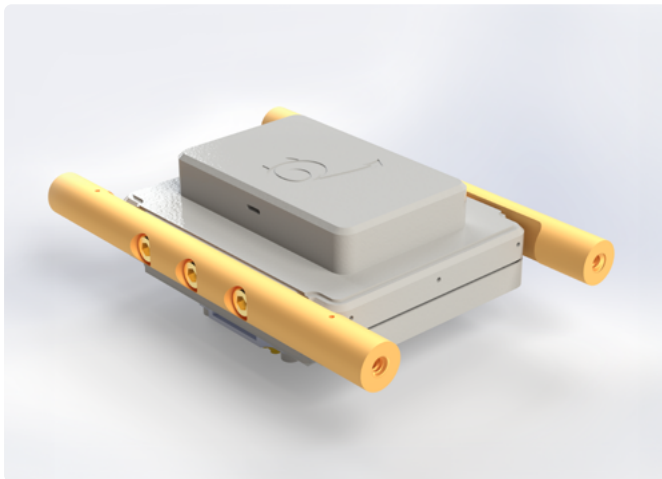


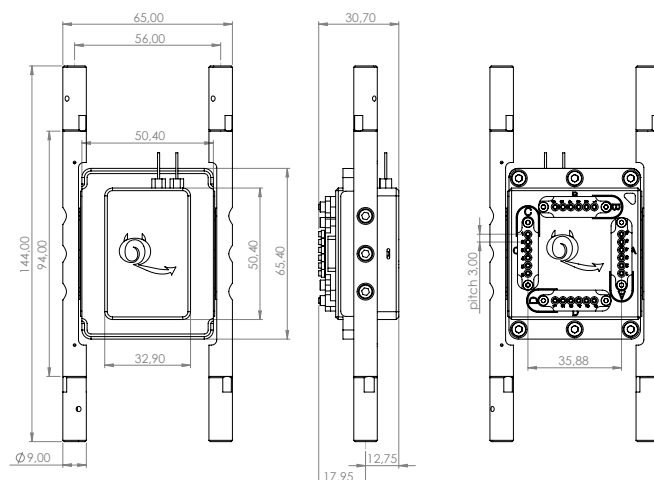
Description	QCage.24 - Stand-alone
Part numbers	Q401 + Q402 + Q403 Optional: Q420 (DC sample board) Optional: Q444 (Normal metal enclosure)
Accessories	Q415 (Support Fixture) Q408+Q409+Q410+Q419 (Alternative adapter plates)
Cables	2 x Q416-30 + 2 x Q417-30 Optional: 2x QN25W
Installation examples	Mounted directly on MXC plate or to custom cold finger extensions



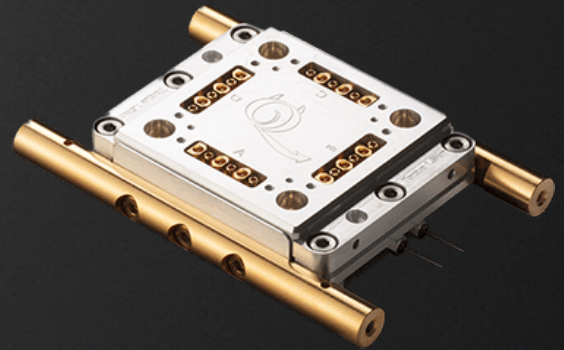
Rear-side and exploded view of QCage.24 for stand-alone installation



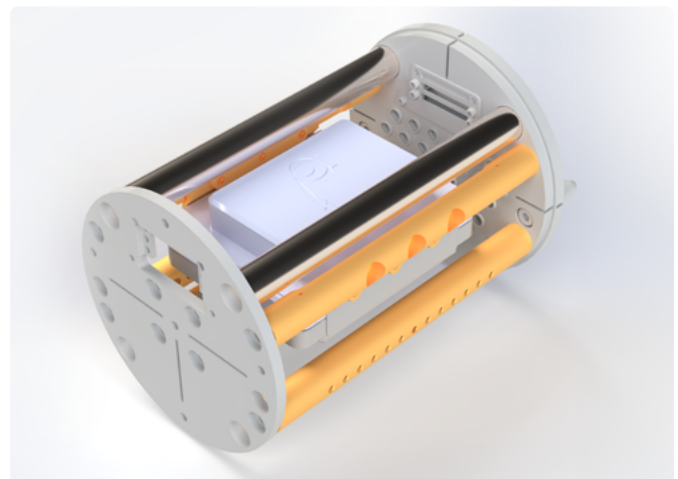
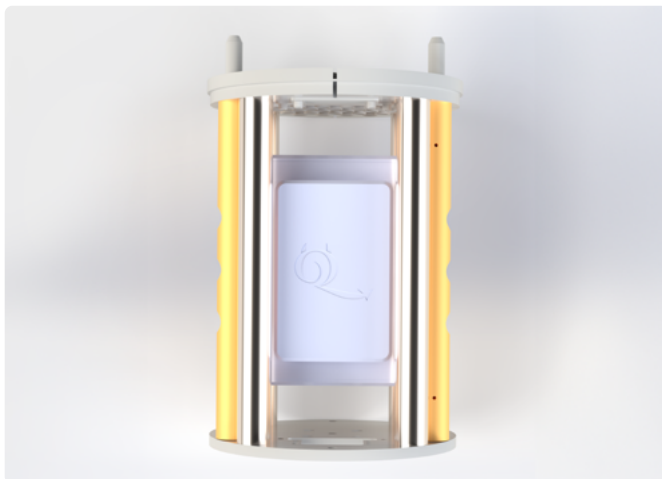
Technical drawing with dimensions



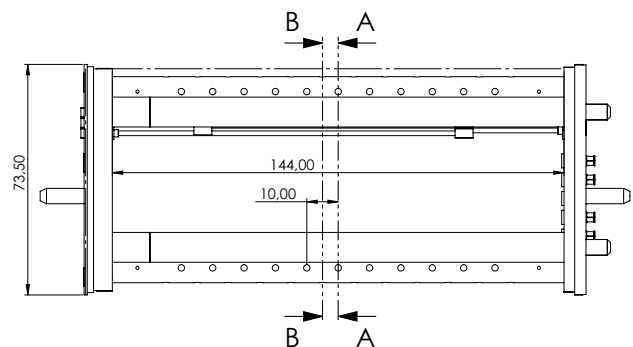
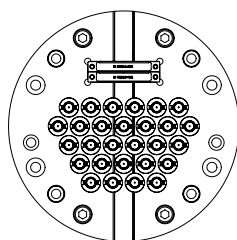
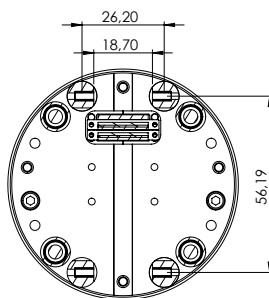
Description	QCage.24 - Oxford Configuration
Part numbers	Q401 + Q402 + Q403 Optional: Q420 (DC sample board) Optional: Q444 (normal metal enclosure)
Accessories	Q415 (Support Fixture) Q408+Q409+Q410+Q419 (Alternative adapter plates)
Cables	2 x Q406-10, 2 x Q407-10 Optional: QN51N25x2
Installation examples	Oxford Instruments - $\varnothing 72/73$ mm Puck Mounting older 94mm length or newer 144mm length



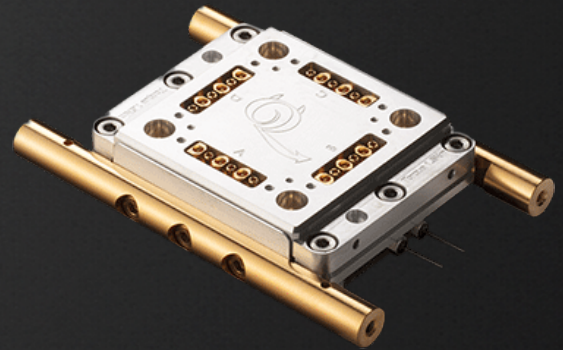
Rear and side view of QCage.24 mounted in a $\varnothing 72/73$ mm Oxford puck



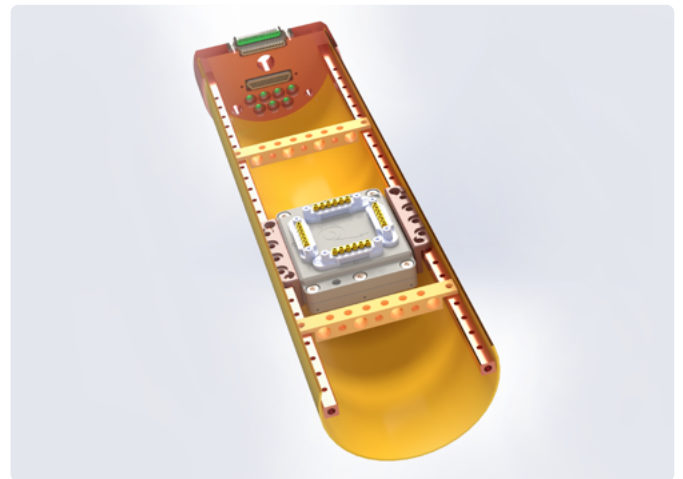
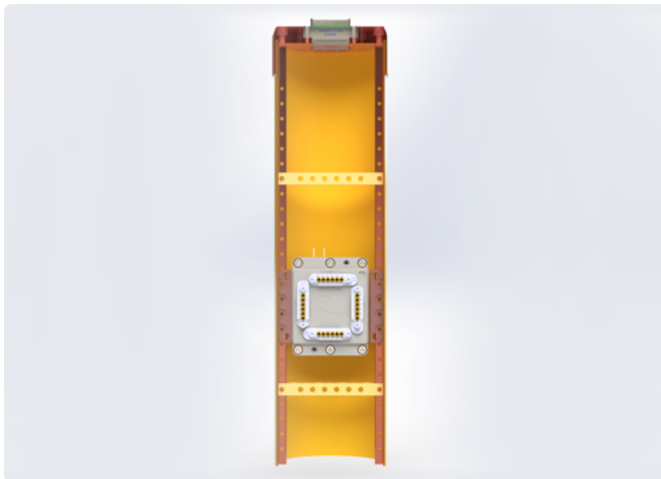
Technical drawing with dimensions



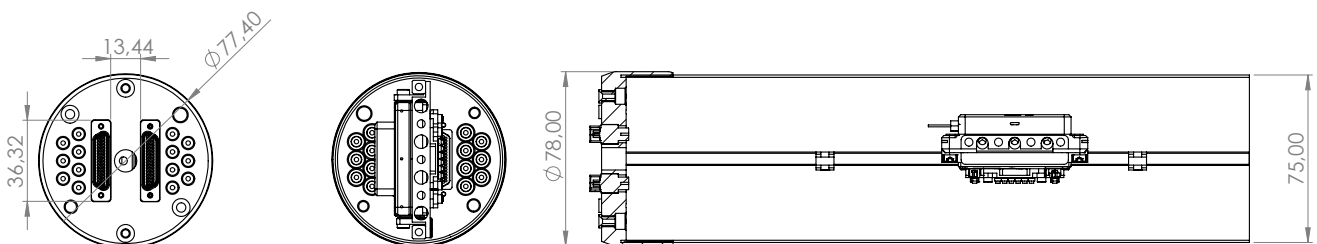
Description	QCage.24 - Bluefors Configuration
Part numbers	Q401 + Q402 + Q403 Optional: Q420 (DC sample board)
Accessories	Q415 (Support Fixture) Q425 (Extraction tool) Q408+Q409+Q410+Q419 (Alternative adapter plates)
Cables	2 x Q406-30 + 2 x Q407-30 Optional: Q2xN25M51 / Q2xN25M100
Installation examples	For mounting in Bluefors Ø78/80 mm bottom loaders



Front and bottom side view of QCage.24 in Bluefors bottom loader

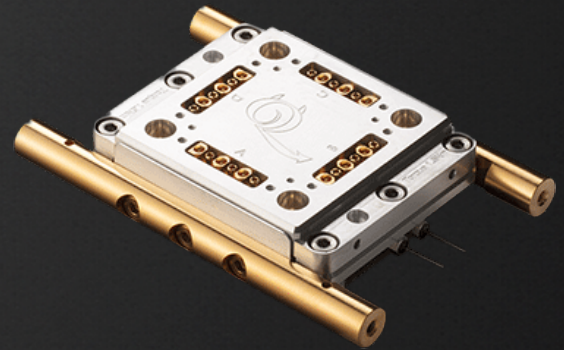


Technical drawing with dimensions



SECTION A-A
SCALE 1 : 2

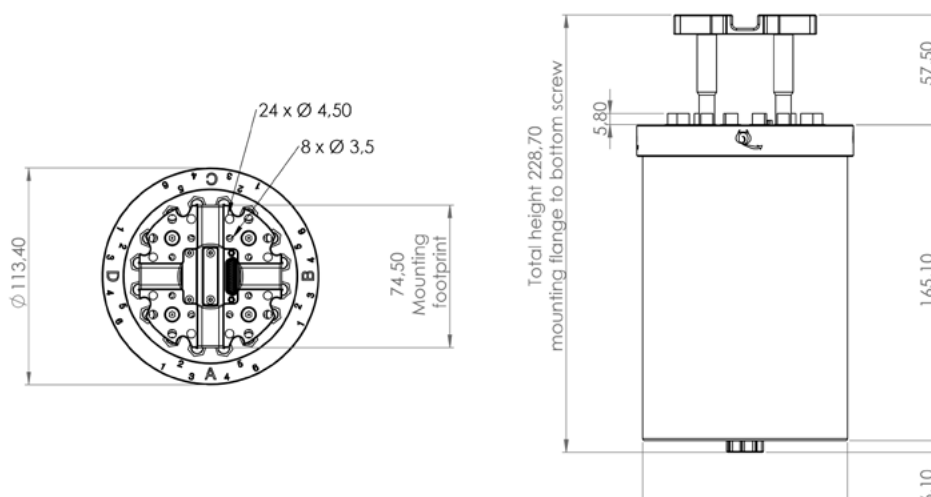
Description	QCage.24 with QCage Magnetic shielding
Part numbers	Q401 + Q402 + Q403 Q423 (QCage magnetic shielding) Optional: Q420 (DC sample board)
Accessories	Q415 (Support Fixture) Q408+Q409+Q410+Q419 (Alternative adapter plates)
Cables	4 x Q412-15 Optional: 2x QN25M25
Installation examples	QCage magnetic shielding fits into most common fridges including Bluefors LD and XLD and Oxford Proteox



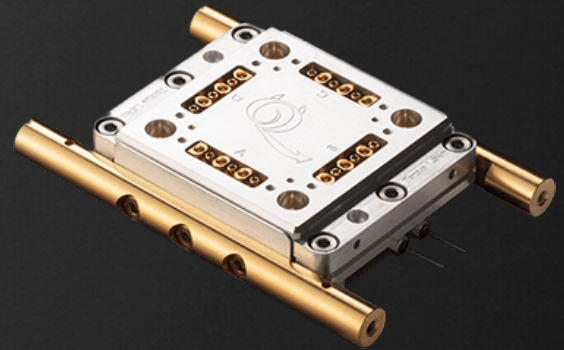
Closed and open view of QCage.24 assembly in cryogenic configuration



Technical drawing with dimensions



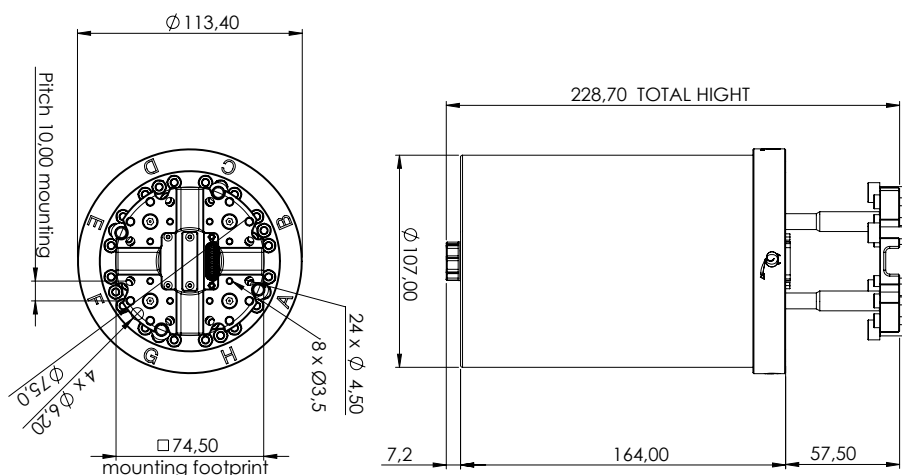
Description	QCage.24 with QCage Magnetic shielding
Part numbers	1 x or 2x (Q401 + Q402 + Q403) Q428 (QCage magnetic shielding) Optional: Q420 (DC sample board) Q450 (mounting bracket)
Accessories	Q415 (Support Fixture) Q408+Q409+Q410+Q419 (Alternative adapter plates)
Cables	6 x Q433_20 Optional: 2x QN25M25
Installation examples	QCage magnetic shielding fits into most common fridges including Bluefors LD and XLD and Oxford Proteox



Closed and open view of QCage.24 assembly in cryogenic configuration



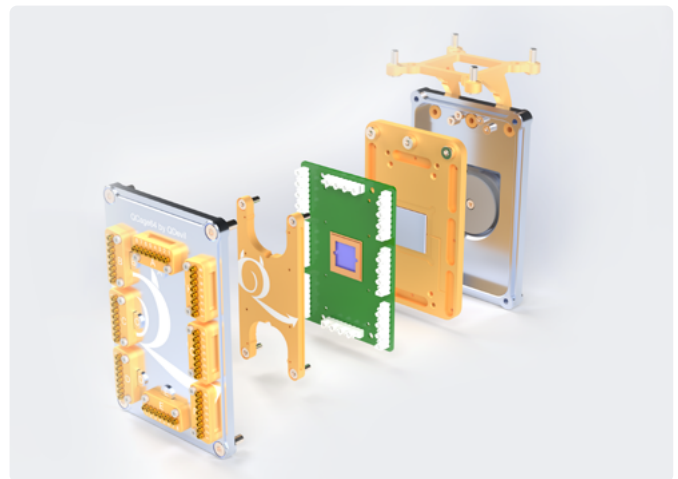
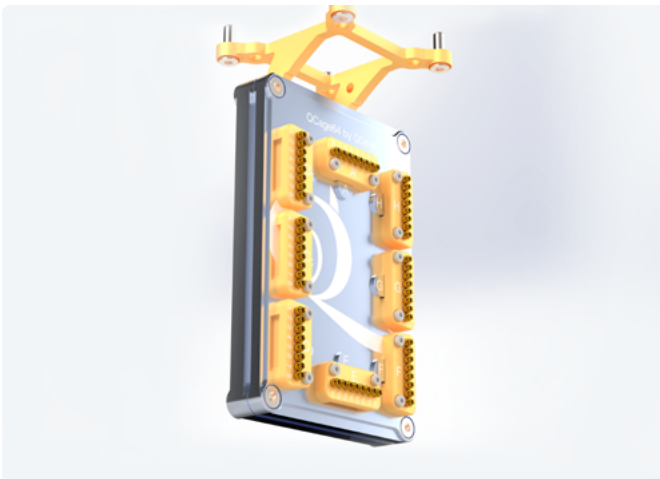
Technical drawing with dimensions



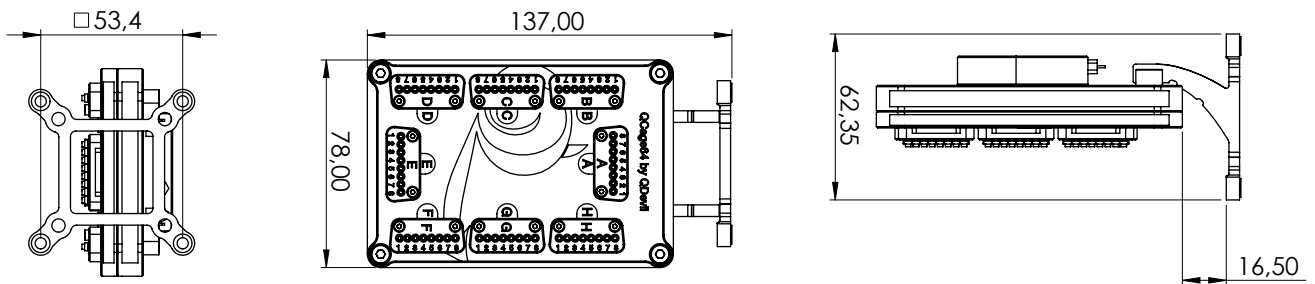
Description	QCage.64 - Stand-alone Configuration
Part numbers	Q429 + Q430 + Q431
Accessories	Q440 (Support Fixture) Q425 (Extraction tool)
Cables	8x Q433_30
Installation examples	For mounting directly to MXC plate or custom plates or brackets



Front and exploded view of QCage.64 for stand-alone installation



Technical drawing with dimensions



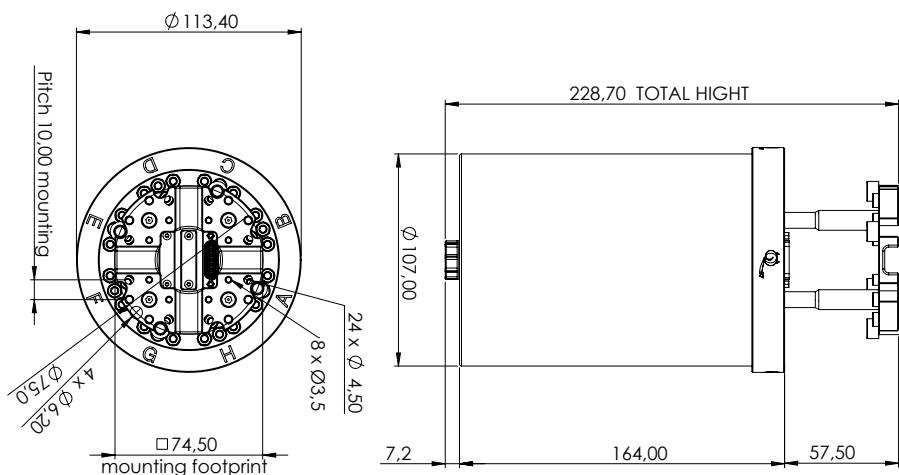
Description	QCage.64 with QCage Magnetic shielding
Part numbers	Q429 + Q430 + Q431 Q428 (Magnetic shielding)
Accessories	Q440 (Support Fixture) Q425 (Extraction tool)
Cables	8x Q433_20 Optional: 2x QN25M25
Installation examples	QCage magnetic shielding fits into most common fridges including Bluefors LD and XLD and Oxford Proteox



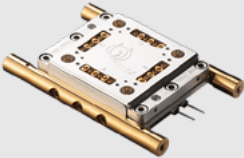

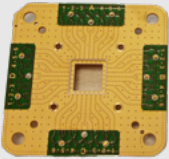
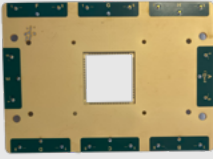

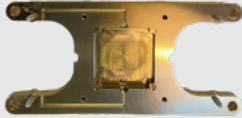

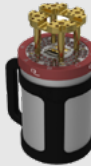

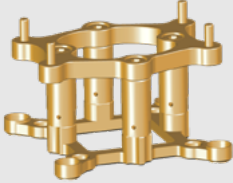

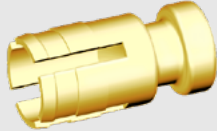
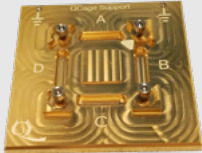

Open and closed view of QCage.64 assembly in cryogenic configuration



Technical drawing with dimensions



Part Numbers Overview

QCage.24		QCage.64				
Q401		QCage.24 system, EMC tight cavity with 24 lines (without sample board).	Q429		QCage.64 system, EMC tight cavity with 64 lines (without sample board).	Main assembly
Q402		QCage.24 sample board, 24 transmission lines.	Q430		QCage.64 sample board, 64 transmission lines.	
Q403		QCage.24 chip holding frame for sample board.	Q431		QCage.64 chip holding frame for sample board.	
Q423		QCage magnetic shielding enclosure (24 lines).	Q428		QCage magnetic shielding enclosure (64 lines).	
Q420		QCage.24 sample board with 2x6 coaxial and 2x25 nano-D.	Q450		Mounting bracket for 2x QCage.24 in magnetic shielding with 64 lines (Q428).	Accessories
Q425		QCage.24 Brass extraction tool for Mini-Coax connectors.	Q426		Cover plugs (x6) for unused connection ports.	
Q415		QCage.24 support fixture for wire bonding.	Q440		QCage.64 support fixture for wire bonding.	Bonding support

Other Part Numbers

Part number	Description
Q406-10	6-channel Mini-Coax (straight) to SMP (jack) cable assembly, 10 cm.
Q406-30	6-channel Mini-Coax (straight) to SMP (jack) cable assembly, 30 cm.
Q407-10	6-channel Mini-Coax (right angle) to SMP (jack) cable assembly, 10 cm.
Q407-30	6-channel Mini-Coax (right angle) to SMP (jack) cable assembly, 30 cm.
Q408	QCage.24 adaptor plates for 5x5mm chip size.
Q409	QCage.24 adaptor plates for 6x6mm chip size.
Q410	QCage Adaptor plates for 7x7mm chip size.
Q412-15	6-channel Mini-Coax right angle jack/plug to SMA straight cable assembly 15 cm.
Q416-30	6-channel Mini-Coax (straight) to SMA (plug) cable assembly, 30 cm.
Q417-30	6-channel Mini-Coax (right angle) to SMA (plug) cable assembly, 30 cm.
Q419	QCage.24 spacer for the thinner chips.
Q433_20	8-channel Mini-Coax (right-angled) to SMP (jack) cable assembly, 20 cm.
Q433_30	8-channel Mini-Coax (right-angled) to SMP (jack) cable assembly, 30 cm.
Q444	QCage.24 system, Normal metal shielded (BeCu/gold) cavity with 24 lines (without sample board).
QN25W	25 pin nano-D female, jackscrews, titanium shell, nonmagnetic, single-ended cable with PTFE wires, 460 mm length.
QN51N25x2	Jumper cable, 51-pin Nano-D female to 2 x 25-pin Nano-D female, titanium shell, nonmagnetic, PTFE wires, 150 mm, 51-pin connector through-hole (non-threaded).
Q2xN25M51	Custom jumper cable, 2 x 25 pin female nano-D to 51 pin female micro-D, titanium shell, nickel-free, PTFE wires, length (max 46cm) and mating specified by customer.
Q2xN25M100	Custom jumper cable, 2 x 25 pin female nano-D to 100 pin female micro-D, titanium shell, nickel-free, PTFE wires, length (max 46cm) and mating specified by customer.
QN25M25	Jumper cable, 25 pin female micro-D to 25 pin female nano-D, titanium shell, nonmagnetic, PTFE wires, 200mm length

If you wish to learn more:

sales@quantum-machines.co

Visit our website and subscribe to our newsletter at:

quantum-machines.co

Download QM Product Brochures

