

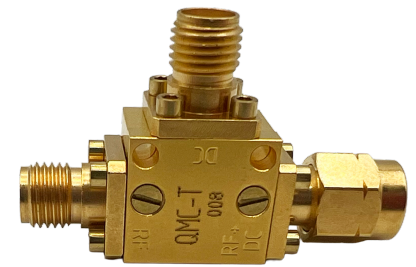


QUANTUM MICROWAVE

www.QuantumMicrowave.com

Cryogenic Bias Tee

P/N: QMC-CRYOTEE-S0.218SMA

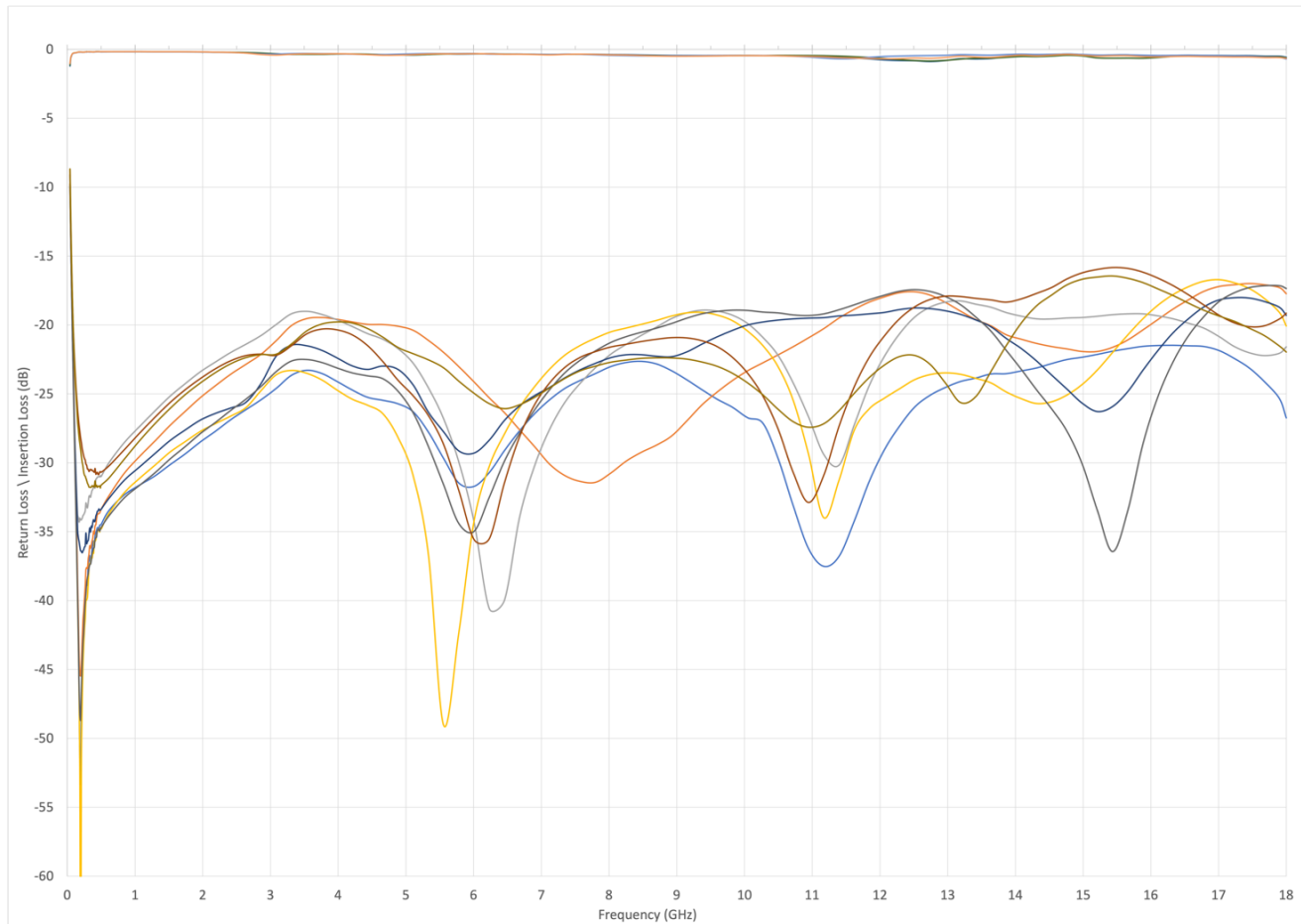


This Bias Tee design is for cryogenic and room temperature operation is ultra compact.

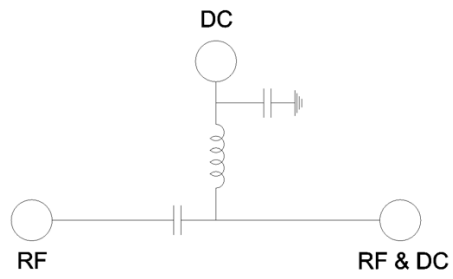
- Broadband design
- Stackable
- Low Insertion Loss
- Cryogenic functionality

| Parameter | Specification | Notes |
|-------------------|--------------------|---------------------------|
| Frequency | 0.2 to 18 GHz | |
| Insertion Loss | 0.25 dB | From 0.2 to 12 GHz (Cold) |
| | 1 dB | From 0.2 to 18 GHz |
| Return loss | -20 dB | From 0.2 to 12 GHz |
| | -15 dB | From 12 to 18 GHz |
| Connectors In/Out | SMA | RF/DC (F) and DC+RF (M) |
| Housing Material | OFHC / Gold Plated | |
| Max Voltage | 35 V | |
| Max Current | 225 mA | |

Measured Data (Typical)



Circuit Schematic



Outline Drawing

