



QUANTUM MICROWAVE

www.QuantumMicrowave.com



## Cryogenic Bias Tee

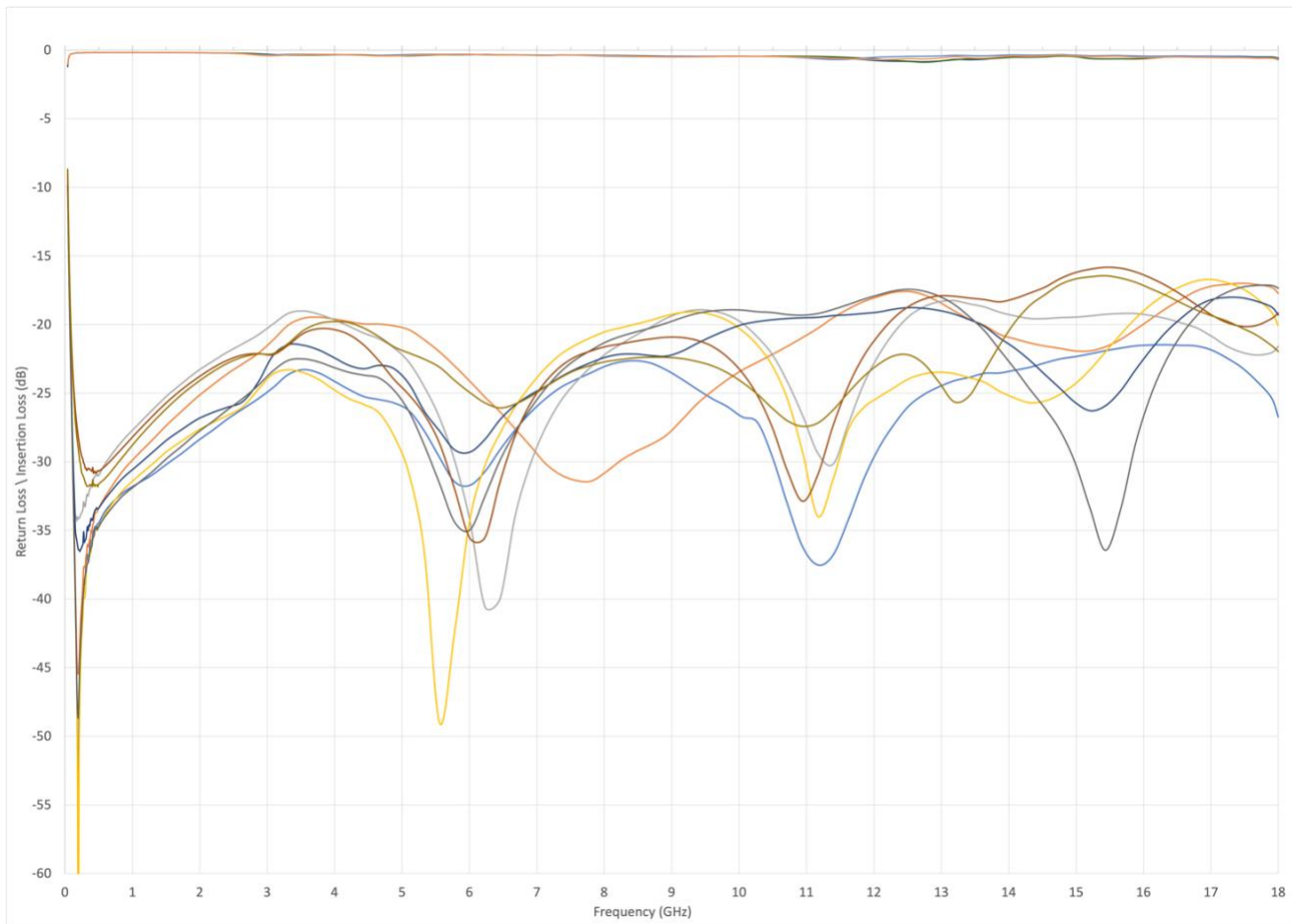
**P/N: QMC-CRYOTEE-S0.218SMA**

This Bias Tee design is for cryogenic and room temperature operation is ultra compact. Constructed out of high quality gold plated OFHC Copper for cryogenic use down to 4K.

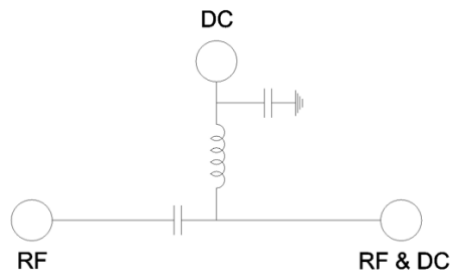
- Broadband design
- Stackable
- Low Insertion Loss
- Cryogenic functionality

Parameter	Specification	Notes
Frequency	0.2 to 18 GHz	
Insertion Loss	0.25 dB	0.2 to 12 GHz (Cold)
	1 dB	0.2 to 18 GHz
Return loss	-20 dB	0.2 to 12 GHz
	-15 dB	12 to 18 GHz
Connectors In/Out	SMA	RF/DC (F) and DC+RF (M)
Housing Material	OFHC / Gold Plated	
Max Voltage	35 V	
Max Current	225 mA	

### Measured Data (Typical)

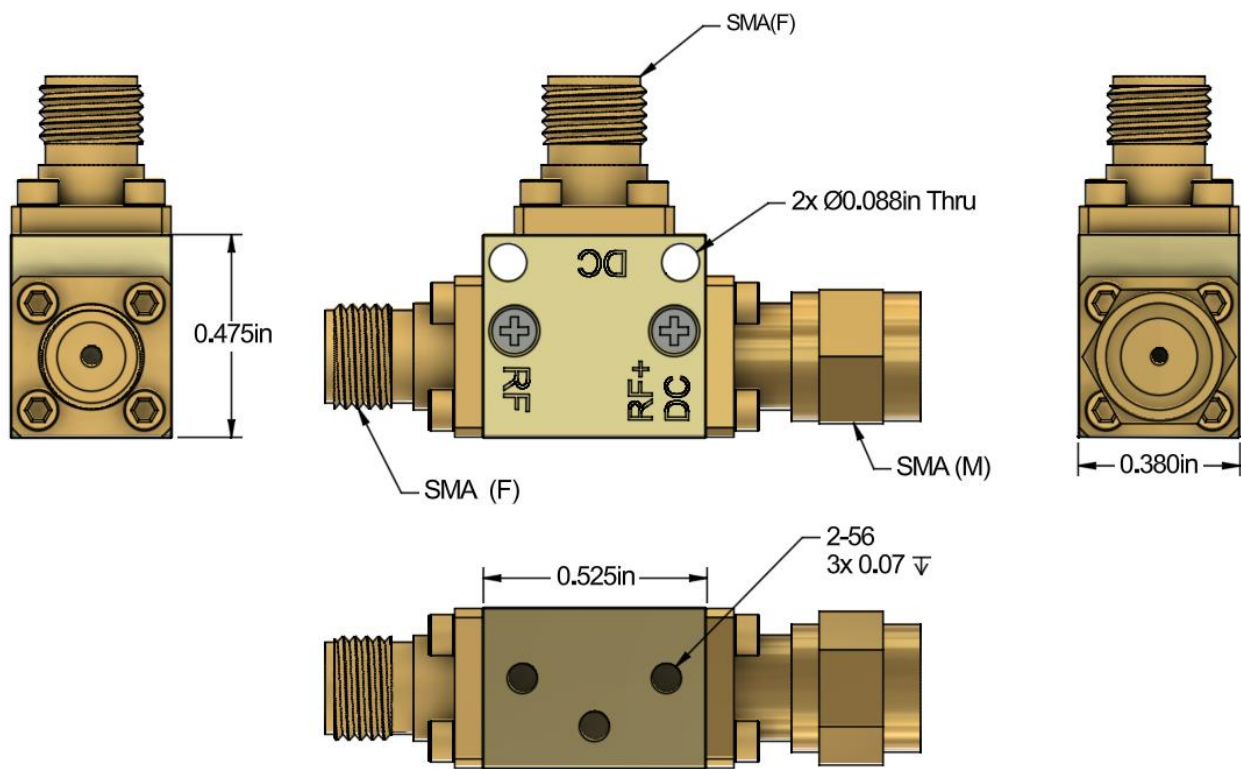


## Circuit Schematic



## Outline Drawing

P/N: QMC-CRYOTEE-0.218SMA Rev C

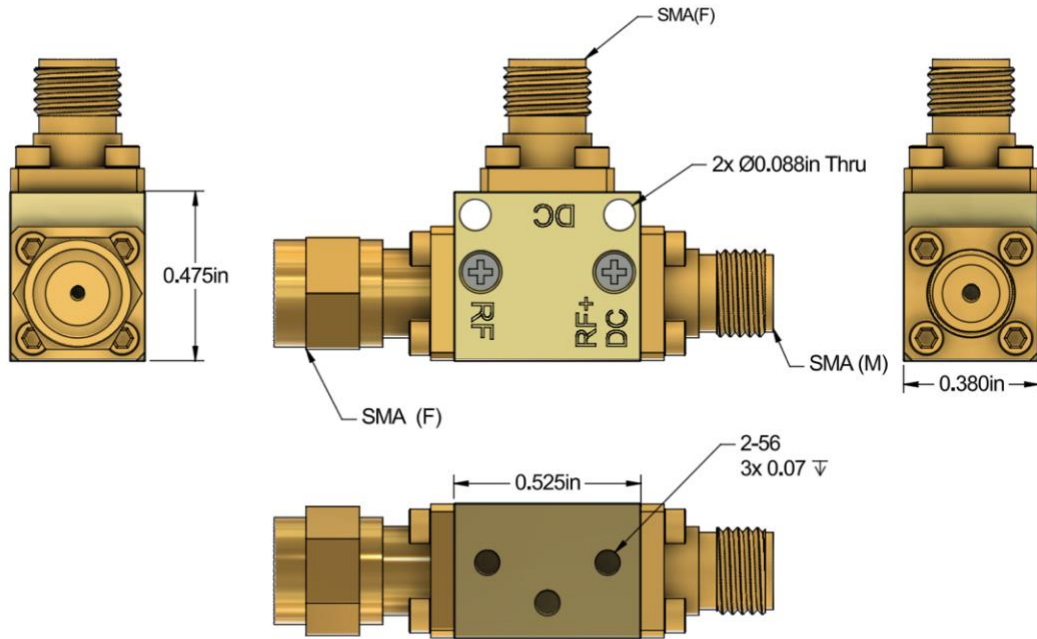




QUANTUM MICROWAVE

www.QuantumMicrowave.com

P/N: QMC-CRYOTEE-0.218SMA-FMF Rev C



P/N: QMC-CRYOTEE-0.218SMA-FFF Rev C

