



QUANTUM MICROWAVE

www.QuantumMicrowave.com

Cryogenic Bias Tee

P/N: QMC-CRYOTEE-0.240K

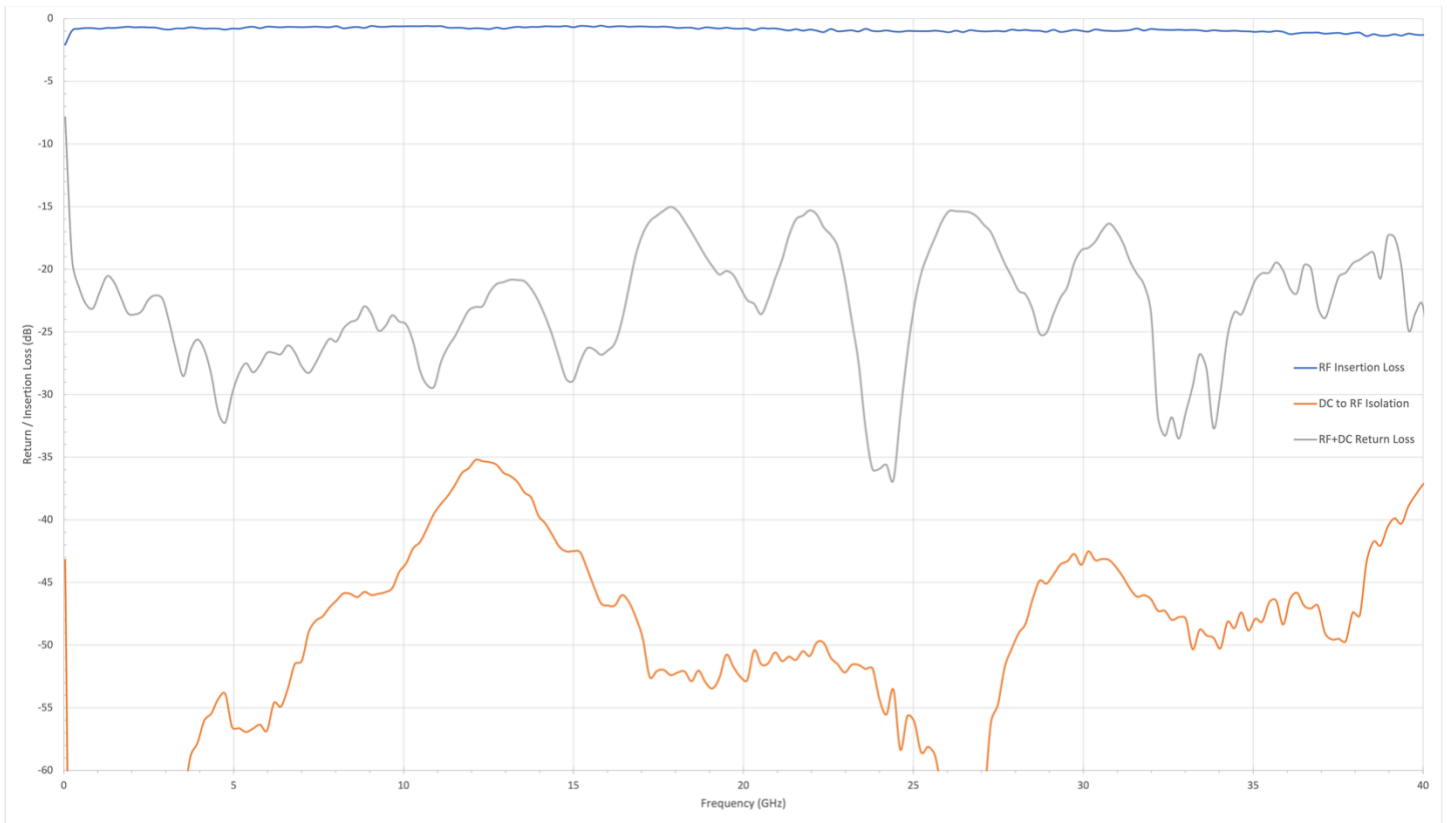


This Bias Tee design is for cryogenic and room temperature operation.

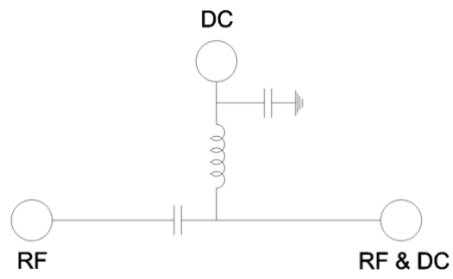
- Broadband design
- Stackable
- Low Insertion Loss
- Cryogenic functionality

Parameter	Specification	Notes
Frequency	0.2 to 40 GHz	
Insertion Loss	0.75 dB	From 0.2 to 12 GHz (Cold)
	1.5 dB	From 12 to 40 GHz
Return loss	-20 dB	From 0.2 to 12 GHz
	-15 dB	From 12 to 40 GHz
RF Connectors	2.92mm	RF (F) and DC+RF (M)
DC Connector	SMA	DC (F)
Housing Material	OFHC / Gold Plated	
Max Voltage	35 V	
Max Current	250 mA	

Measured Data (Typical)



Circuit Schematic



Outline Drawing

