



QUANTUM MICROWAVE

www.QuantumMicrowave.com

# Cryogenic Bias Tee

P/N: QMC-CRYOTEE-0.0515SMA Rev A

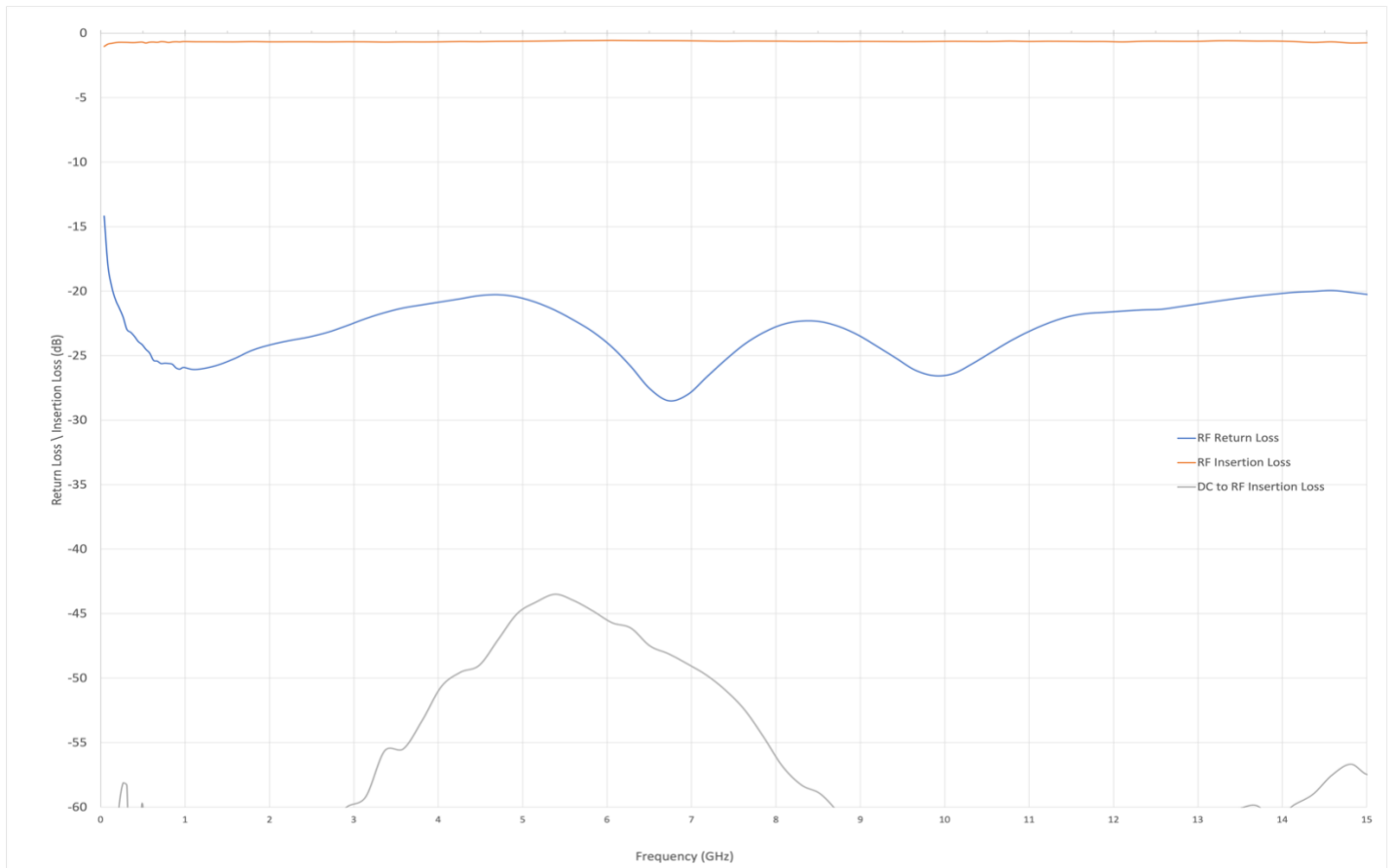


This Bias Tee design is for cryogenic and room temperature operation.

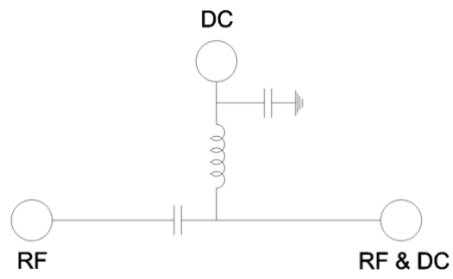
- Broadband design
- Stackable
- Low Insertion Loss
- Cryogenic functionality

| Parameter         | Specification      | Notes                      |
|-------------------|--------------------|----------------------------|
| Frequency         | 0.05 to 15 GHz     |                            |
| Insertion Loss    | 0.25 dB            | From 0.05 to 10 GHz (Cold) |
|                   | 0.75 dB            | From 10 to 15 GHz          |
| Return loss       | -20 dB             | From 0.05 to 10 GHz        |
|                   | -15 dB             | From 10 to 15 GHz          |
| Connectors In/Out | SMA                | RF/DC (F) and DC+RF (M)    |
| Housing Material  | OFHC / Gold Plated |                            |
| Max Voltage       | 35 V               |                            |
| Max Current       | 100 mA             |                            |
| DC bandwidth      | DC - 400 kHz       |                            |

### Measured Data (Typical)



## Circuit Schematic



## Outline Drawing

