



Cryogenic Choke

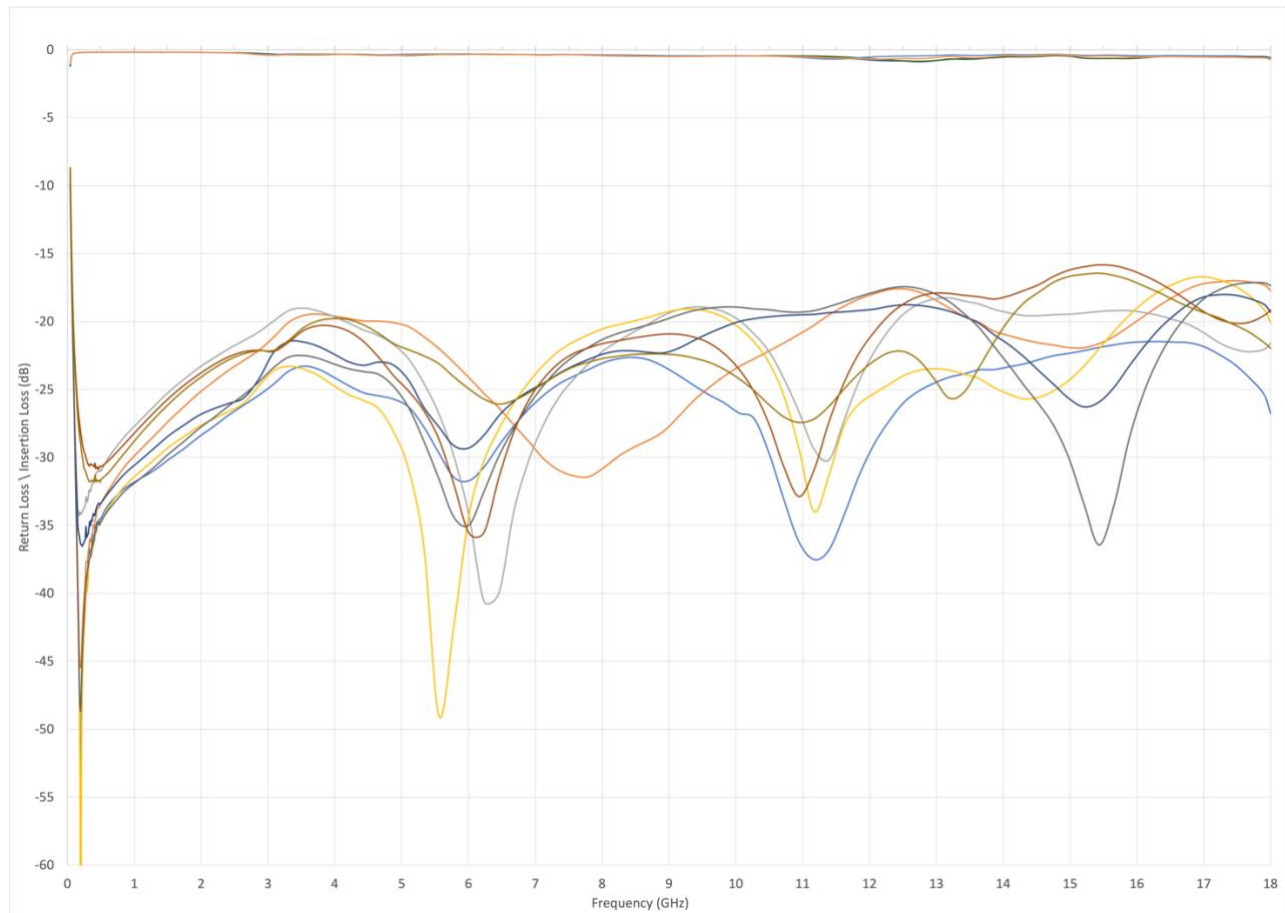
P/N: QMC-CRYOCHOKE-0.218SMA

This Bias Tee design is for cryogenic and room temperature operation.

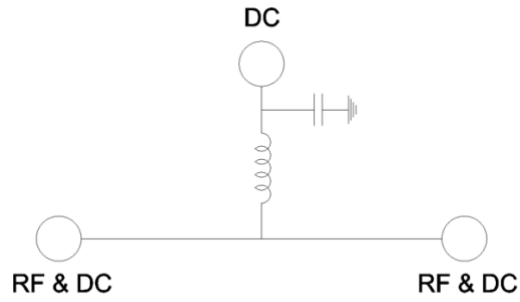
- Broadband design
- Stackable
- Low Insertion Loss
- Cryogenic functionality

Parameter	Specification	Notes
Frequency	0.2 to 18 GHz	
Insertion Loss	0.25 dB	From 0.2 to 12 GHz (Cold)
	0.75 dB	From 0.2 to 18 GHz
Return loss	-20 dB	From 0.2 to 12 GHz
	-15 dB	From 12 to 18 GHz
Connectors In/Out	SMA	DC(F), RF+DC (F) and DC+RF (M)
Housing Material	OFHC / Gold Plated	
DC	DC – 500 KHz	
Max Current	250 mA	

Measured Data (Typical)



Circuit Schematic



Outline Drawing

