

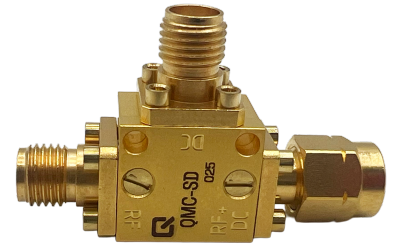


QUANTUM MICROWAVE

www.QuantumMicrowave.com

Cryogenic Bias Diplexer

P/N: QMC-CRYODPLX-S0218SMA



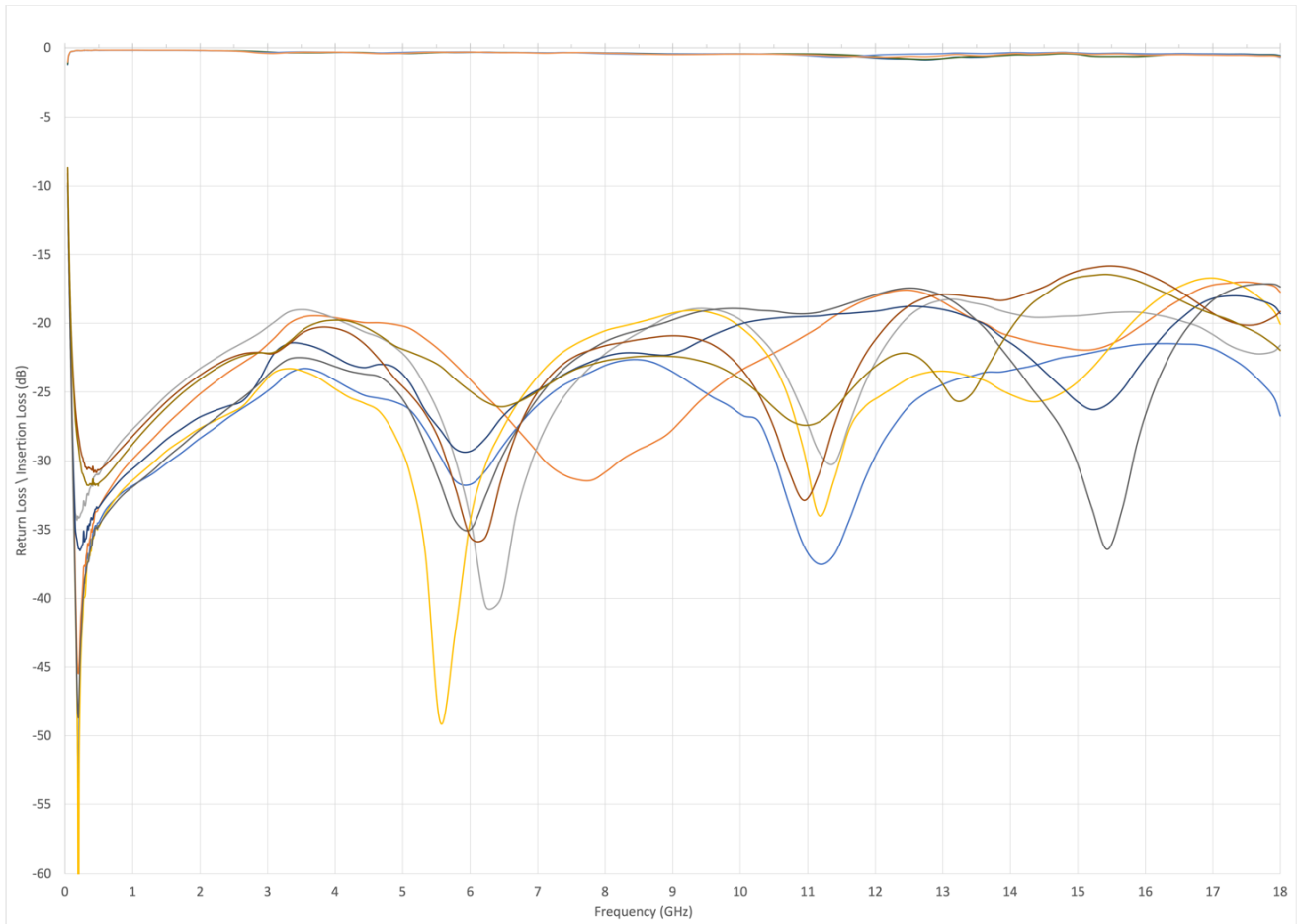
This Diplexer design is for cryogenic and room temperature operation is ultra compact. Works as a Bias-T w/ DC Bandwidth.

- Broadband design
- Stackable
- Low Insertion Loss
- Cryogenic functionality

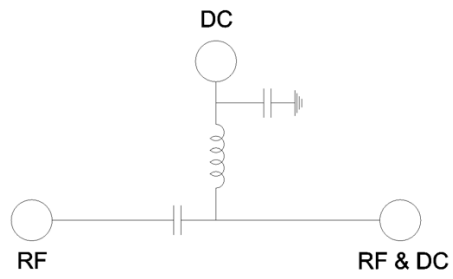
Parameter	Specification	Notes
Frequency	DC to 500 MHz (DC path) 2 to 18 GHz (RF path)	
Insertion Loss	0.25 dB	From 2 to 12 GHz (Cold)
	1 dB	From 2 to 18 GHz
Return loss	-20 dB	From 2 to 12 GHz
	-15 dB	From 12 to 18 GHz
Connectors In/Out	SMA	RF/DC (F) and DC+RF (M)
Housing Material	OFHC / Gold Plated	
Max Voltage	35 V	
Max Current	225 mA	

Measured Data

(Typical)



Circuit Schematic



Outline Drawing

