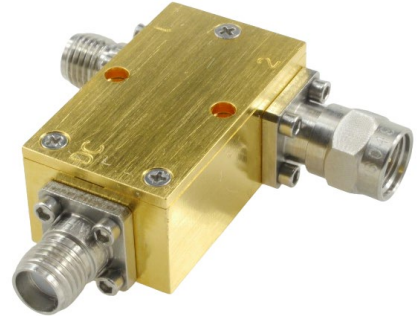


## P/N: QMC-BIASTEE-0010 Low Freq Bias Tee

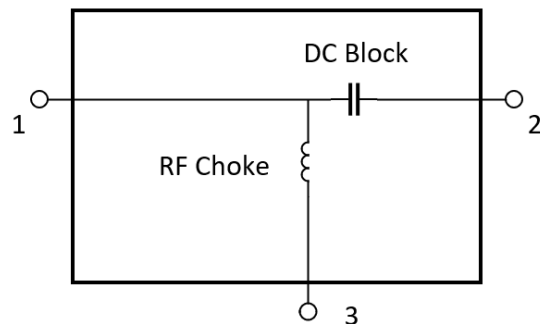
### Features

- DC path: DC-500 kHz
- RF Path: 3MHz-10 GHz
- OFHC Housing, Gold Plated
- Low Return Loss
- SMA bias connector
- Stackable



Parameter	Specification	Notes
Frequency Range	DC path: DC-500 kHz (Port 3 to port 1) RF Path: 3MHz-10GHz (Port 2 to Port 1)	
RF Insertion Loss	1dB typ. (see plots)	
RF Return Loss	>15dB typ., 10MHz to 10 GHz	See plots
Connectors	Port 1, RF+DC: SMA (f) Port 2, RF Path: SMA (m) Port 3, DC: SMA (f)	For stability, the DC port should not be left floating. A minimum of 10kΩ impedance is recommended.
Max Voltage	+/-20VDC	
Max Current	600 mA	
Cross-over Frequency	1MHz typ.	

### Block Diagram

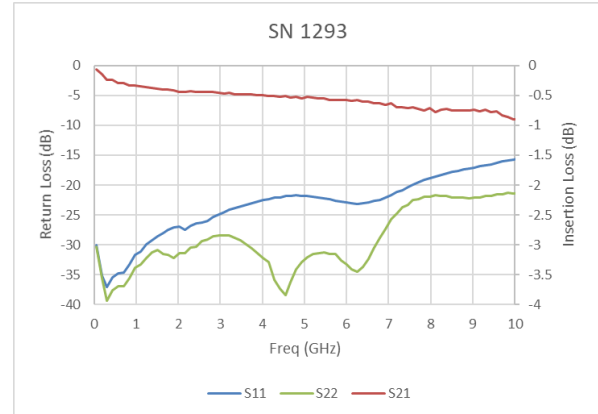


## Measured Data (typical)

S21 (Blue) S11 (Yellow) .050 to 50 MHz



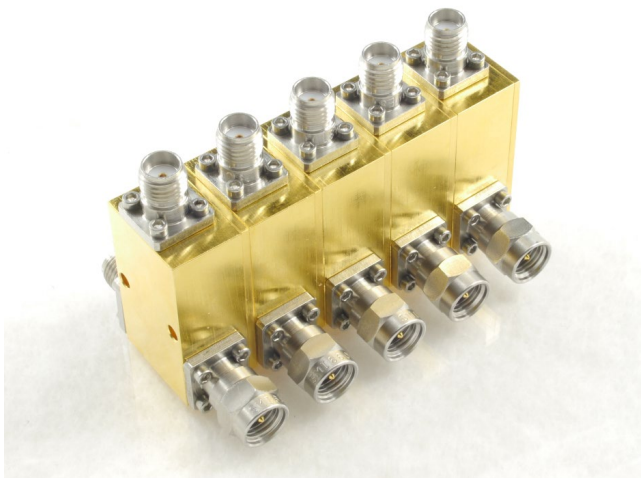
S21 (Red) S11 (Blue) .050 to 10 GHz



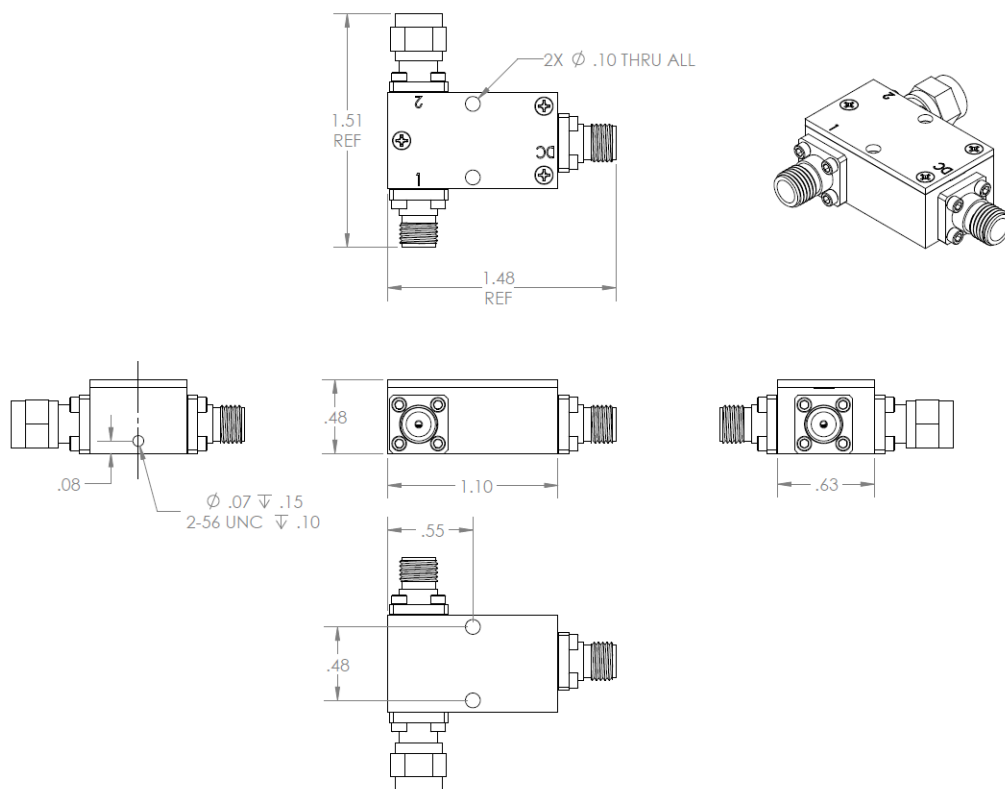
S31 (Blue) .050 to 3MHz



## Stacked Bias Tees



## Outline Drawing, inches [mm]



**Quantum Microwave Components Phone 857-499-0071, Fax 888-893-7188**