



QUANTUM MICROWAVE

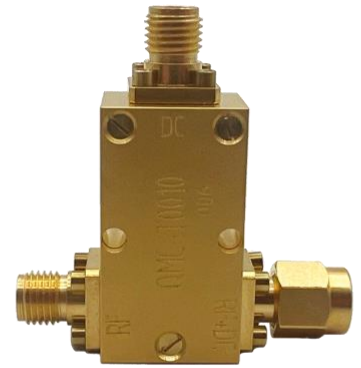
www.QuantumMicrowave.com

# Low Frequency Cryogenic Bias Tee

P/N: QMC-CRYOTEE-0010

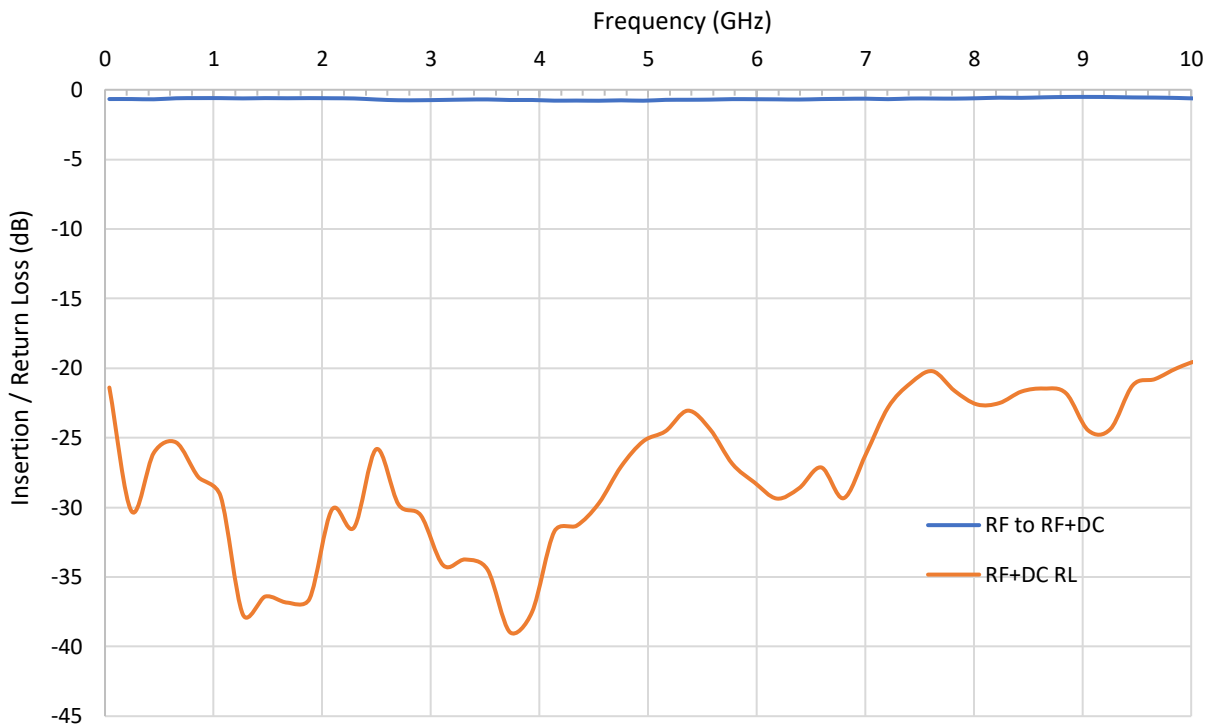
Features:

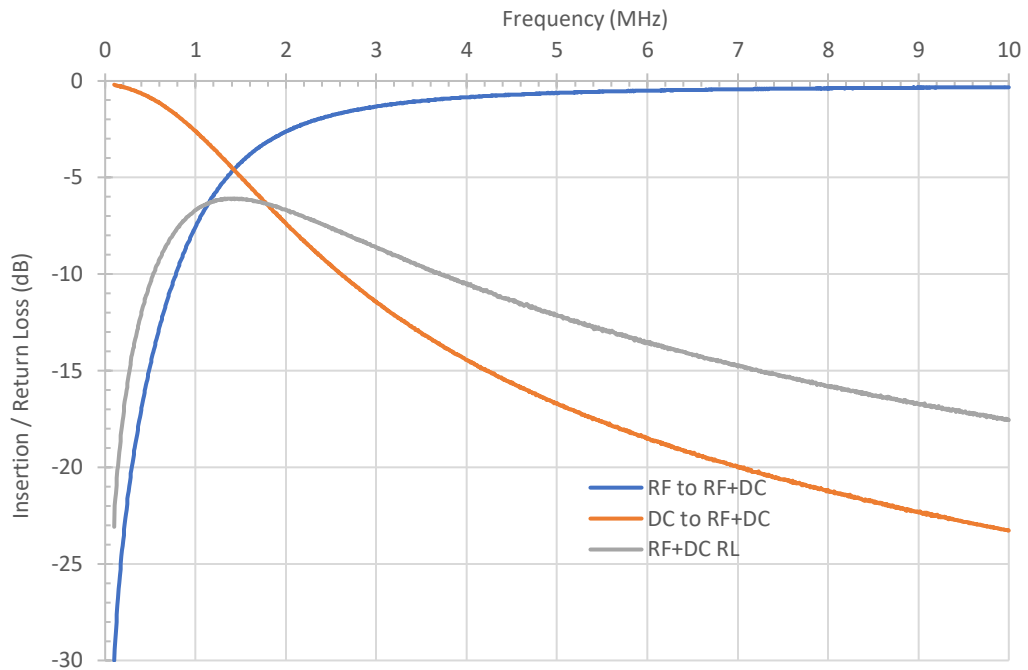
- RF Path: 3 MHz to 10 GHz
- Stackable
- Low Insertion/Return Loss
- Cryogenic functionality



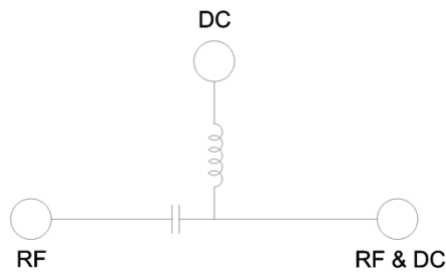
Parameter	Specification	Notes
Frequency Range	DC path: DC - 500kHz (DC to RF+DC) RF Path: 3 MHz - 10 GHz (RF to RF+DC)	
Insertion Loss	1 dB typ.	
Return loss	>15 dB typ.	10 MHz to 10 GHz
Connectors In/Out	Port 1, RF+DC: SMA(M) Port 2, RF SMA(F) Port 3, DC: SMA(F)	
Housing Material	OFHC / Gold Plated	
Max Voltage	20 V	
Max Current	500 mA	

## Measured Data (Typical)





### Circuit Schematic



### Outline Drawing

