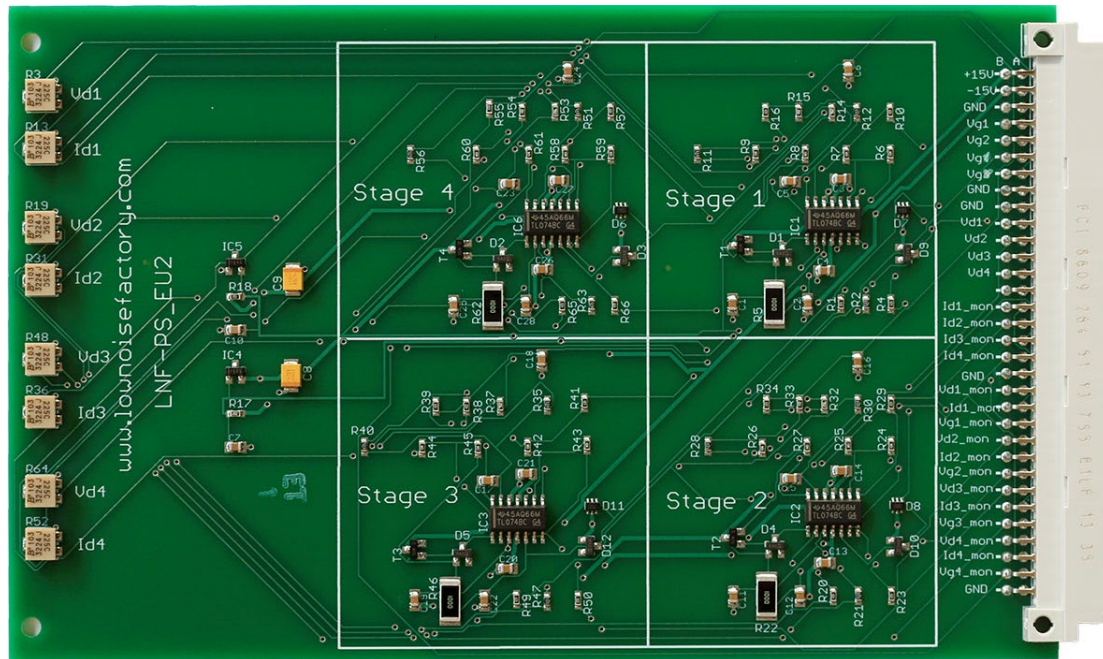


Datasheet

LNF-PS_EU2

FET Constant Current Power Supply



Specifications				
Parameter	Min	Typ	Max	Comment
Vd	0.0 V		2.0 V	
Id	0.0 mA		50 mA	
Vg	≈ -14 V		≈14 V	
Ig	-5 mA		+5 mA	
Idmon response		0.1 V/mA		
Operating temperature range	0 C		50 C	Non-condensing

LNF-PS_EU2 is a constant current power supply designed for LNF's Low Noise Amplifiers. It is capable of powering up to four amplifiers simultaneously. The drain voltages are regulated and adjustable within a wide range, and the gate voltages are automatically and continuously adjusted to give a set drain current. The power supply is delivered on a standard 160x100 mm EuroCard with a DIN 41612 64 pin connector. Drain voltage and current are set by trim potentiometers on the side of the board.

The user must supply +/-15 V to the board through the DIN connector.